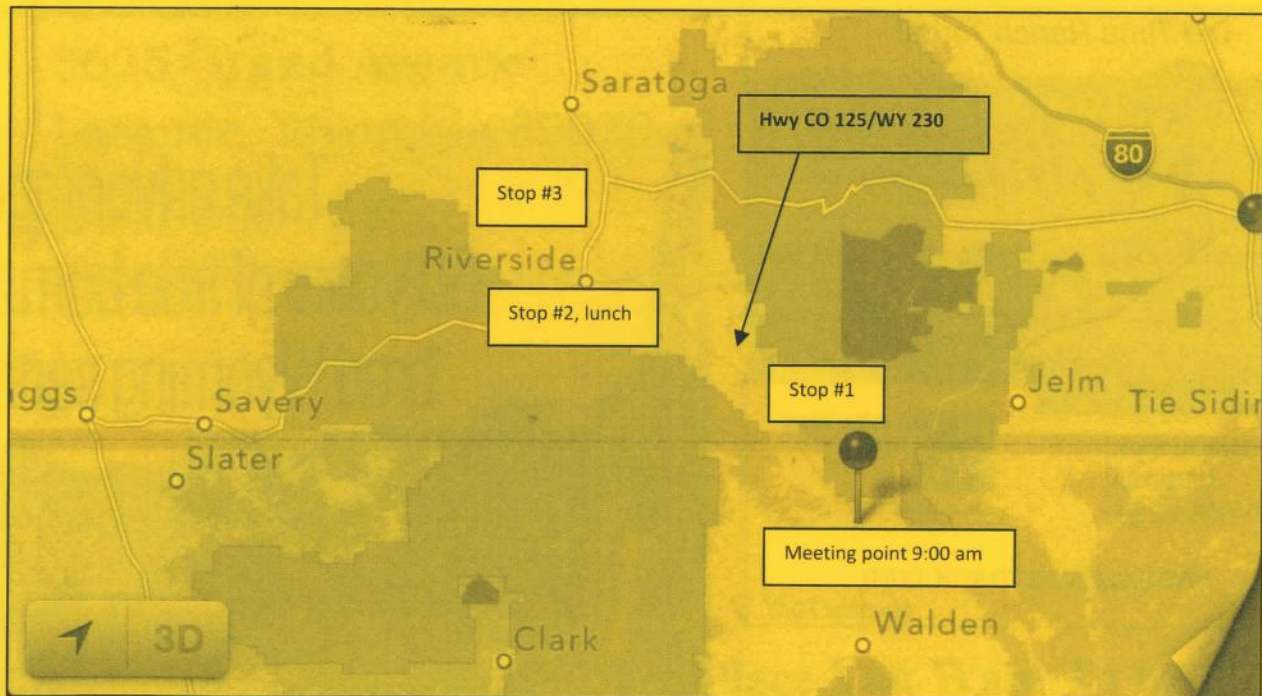


Laramie Kiwanis Club's 63rd Annual Old-Time Ranch Tour

Saturday, July 20, 2013



Schedule:

9:00 AM: Meeting Point: Junction of CO highways 125 and 127, just north of Walden.

9:45 - 10:45 AM: Stop #1: Big Creek Ranch

11:15 AM – 12:15 PM: Stop #2: Grand Encampment Museum

12:15 PM – 1:15 PM: Lunch at the Encampment Town Park

1:30 – 2:30 PM: Stop #3: Silver Spur Ranch (South Cow Creek HQ), northwest of Encampment

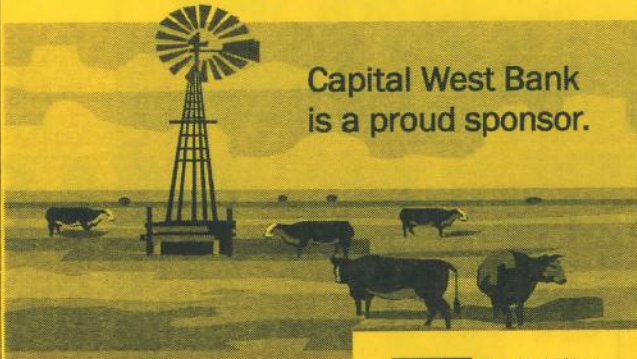
2:30 PM: Return Home



Our customers have long recognized our outstanding personal service that sets us apart. Stop in today and meet our dedicated staff and experience our exceptional banking services.

307-745-3619 • 3908 Grand Avenue • ANBbank.com • Member FDIC

Thank you Kiwanis Members
for organizing the
Old Time Ranch Tours!



Capital West Bank
is a proud sponsor.

2020 Grand Ave.
Laramie
307-745-7351

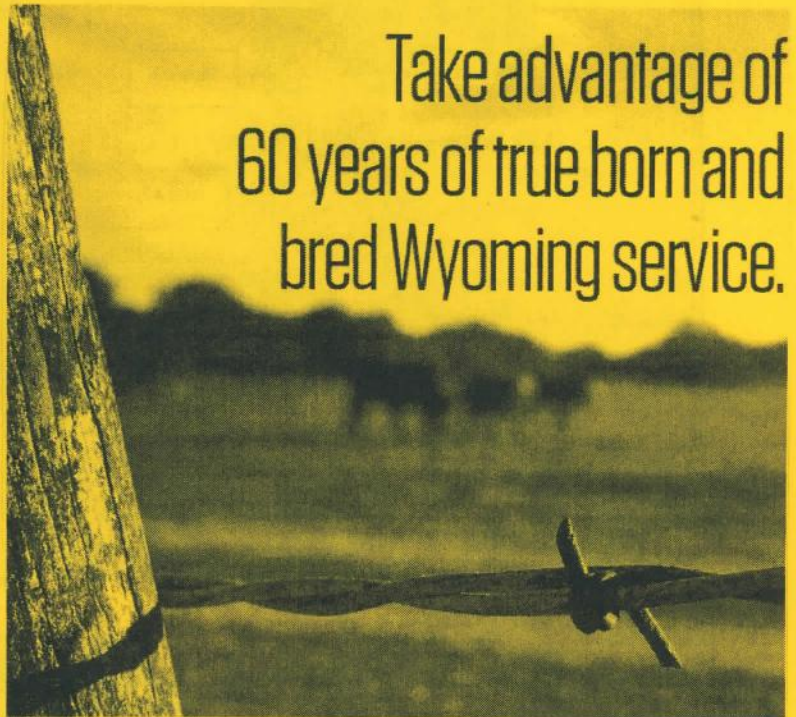


www.capwestbank.com

Member FDIC



Take advantage of
60 years of true born and
bred Wyoming service.



1610 E Reynolds
Laramie, WY 82072
307.721.5600
www.uniwyo.com



63rd Old Time Ranch Tour Saturday, July 20, 2013

The Old Time Ranch tours began in 1951 under the guidance and vision of Dr. Robert Burns and have continued every year except 1982. The Laramie Kiwanis club believes it is important to pass on the knowledge and history held by local ranchers and landowners. There is no charge for the event, but if you would like to make a donation, you will find donation envelopes with any Kiwanis member. Donations and our few sponsors help make this event

possible on an annual basis.

Chairperson: Larry Stuempf

Committee Members: Grant Showacre, John Smith, Chelsa Harrison, Julie Wickett.

Master of Ceremonies: George Gladney

RULES AND INFORMATION:

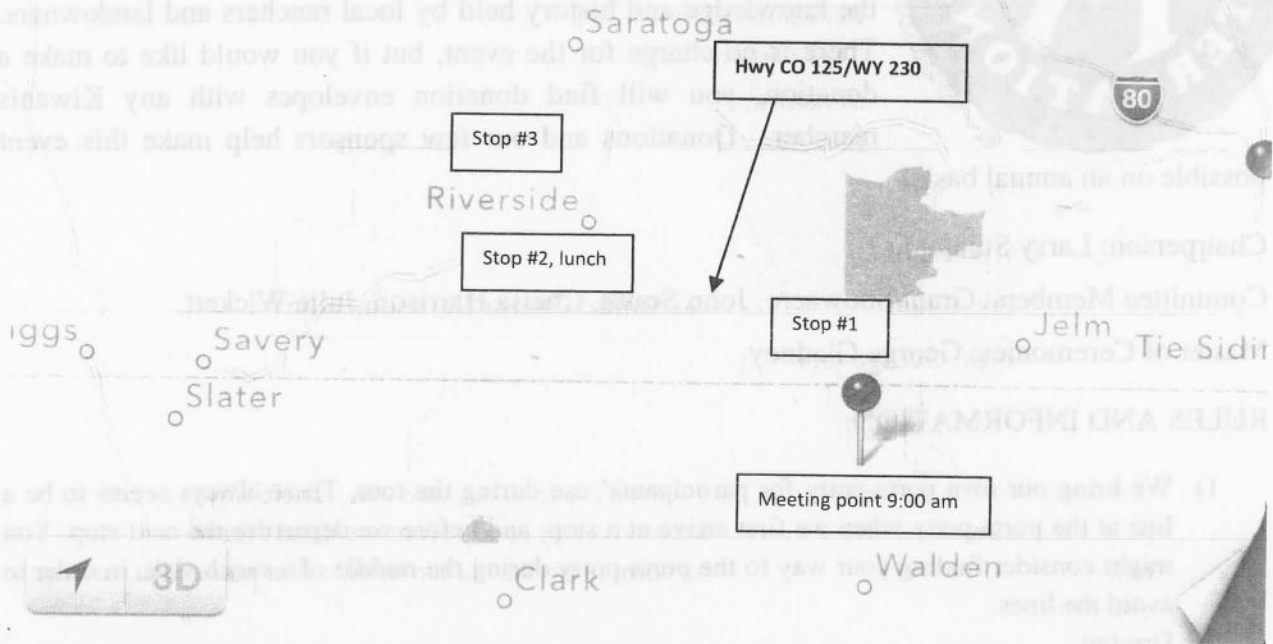
- 1) We bring our own porta-potty for participants' use during the tour. There always seems to be a line at the porta-potty when we first arrive at a stop, and before we depart for the next stop. You might consider finding your way to the porta-potty during the middle of a ranch visit, in order to avoid the lines.
- 2) Driving
 - a. Please obey all traffic laws and signs.
 - b. Stay to the right on hill crests.
 - c. Please use caution while crossing railroad tracks. You will not be left behind as there are Kiwanis members scattered throughout the tour who will stay in cell phone contact with the leaders.
 - d. Keep a safe distance between cars. We will travel at 25 to 35 miles per hour on gravel roads.
- 3) If you have difficulty walking, please inform the first traffic director at each site so that an appropriate parking place may be found. Please do not drive on grass.
- 4) Please keep children and pets with you at all times. Pets **MUST** remain on a leash, as we will be in close proximity to livestock owned by our hosts.
- 5) We are the guests of the ranches and historical sites. Please **DO NOT** remove any items including artifacts found on the ground.
- 6) Please be aware of the risk of fire in our arid climate, and **DO NOT SMOKE** outside your vehicle, and please do not throw cigarette butts out your windows.

Neither the committee, individually or collectively, nor the sponsoring organizations accept any responsibility for accidents. Please stay alert while driving!

Thank you to our sponsors and a special thanks to Honeywagon for their generous loan of the porta-potty.

KIWANIS 63RD ANNUAL OLD-TIME RANCH TOUR

MAP OF THE AREA AND STOPS:



9:00 AM: Meeting Point: Junction of CO highways 125 and 127, just north of Walden.

9:45 10:45 AM: Stop #1: Big Creek Ranch

11:15 AM – 12:15 PM: Stop #2: Grand Encampment Museum

12:15 PM – 1:15 PM: Lunch at the Encampment Town Park

1:30 – 2:30 PM: Stop #3: Silver Spur Ranch (cow creek), northwest of Encampment

2:30 PM: Return Home

STOP ONE: BIG CREEK RANCH -
HOST, MARK DUNNING. OWNER: GATES FAMILY FOUNDATION/CHARLES GATES.

Big Creek Ranch lies along the border between Colorado and Wyoming and contains approximately 121,000 acres of deeded land with grazing rights in US National Forests and BLM grazing, with a water right of approximately 8000 acres, dating back to May 17, 1882 and includes a score of territorial rights.

The Big Creek Ranch was settled by John Barney Hunter and Tom Hunter 1880. They were from Greenville, Illinois. Jack Hunter, another brother, came to the area in 1890 and bought the ranch from Tom's children. Later the ranch was sold to John Barney Hunter. In 1891, John Barney and his two sons, W.H. (Granny Bill) and J.B., incorporated the Big Creek Livestock Company headquartered in Buffalo, Illinois, with incorporation papers filed in both Illinois and Wyoming and capital stock was valued at \$250,000.

J. Barney Hunter's nephew, Harry (aka "Big Creek Harry") came to Wyoming 1884 at the age of 17. First, he worked for the ranch and then was put in charge at the age of 20. By 1895, the ranch covered 4,000 acres, 3,000 of which were meadow land and held 1,000 cattle and 400 horses. Harry purchased half interest in the ranch in 1896. The Hunters were prime movers in assembling the units of the Big Creek Ranch in the course of half a century of cattle-raising. The shipment records at the various livestock markets of the West will disclose literally millions of dollars produced in cattle on this famous place.

By 1900, the ownership became Hunter, Casteel and Hunter (owned by W. H. Hunter, Ira Casteel, and Harry Hunter). They bought out whole ranch from J. Barney, who was then 75 years old. J. Barney Hunter died in 1911.

Rumor has it that Casteel was brought in as an accountant. In September of 1909, Hunter, Casteel & Hunter built the large barn of 76 x 80 feet with capacity of 100 tons of hay and 46 horses. It cost \$5,000. On October 21, everyone was invited to a huge barn dance party, which lasted for three days and nights! George Simonis and Atis Moury are credited with building the barn. They may have built the houses and other buildings. The barn burned December 25, 1924, but was re-built soon after.

Henry Gebhard came from Germany in 1869 and entered the butcher business in Colorado. Forced to go to the Plains areas for his cattle, he became interested in developing his own herds, so bought the Hunter interests. After his death, his sons, Otto, Harry and Paul operated under the firm name of Gebhard Bros. In 1926, Otto bought out his brothers' interests.

Otto operated the business until 1941 when it was sold to Wendell W. Anderson, a Detroit manufacturer, who operated Bundy Tubing Co. Mr. Gebhard remained as ranch manager, continuing the cattle operation. In January 1967, Mr. Charles C. Gates, Jr., of Gates Rubber Company purchased the ranch; it is currently owned by the Gates Family Foundation.



STOP 2: GRAND ENCAMPMENT MUSEUM – HOST, JOHN VARNER.

The Grand Encampment Museum, located in Encampment, Wyoming, preserves history with its collection of over a dozen historical buildings filled with artifacts representing the timber, mining, and agricultural history of the Encampment valley.

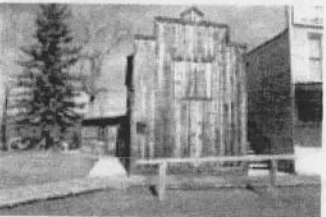
We will be given a tour of several of the buildings and exhibits by our host. The buildings include:



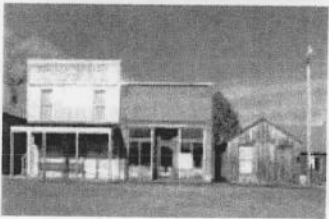
The **Doc Culleton Memorial Building** is our main structure that houses many of our artifacts and our gift shop. Check in at this location first for details about all of our buildings/structures and tours.



This is the world famous **two story outhouse**. This is a replica of the original located in Wyoming. When it started to snow, they would lift up the bottom seats as seen on the lower right. Once spring came and all the snow melted they cleaned out the whole thing and locked the top, for prankster sake, and went back to using the bottom.



The log building was originally a cabin in Riverside. The **blacksmith shop** was an important feature of every early mining town. There were always horses to shoe & wagon wheels to shrink.

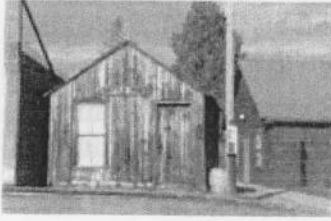


The **Palace Bakery and Ice Cream Parlor** was originally owned and operated by Mr. & Mrs. Koffman about 1800, on McCaffrey Ave. Upstairs was the Royal Neighbors of America Lodge in 1945. The lodge was sold for \$50.00 to Robert Bechtel, who used it for a painting & sign lettering shop. Colonel Paul Bechtel eventually donated the building to the museum.



The **Kuntzman Building** was built in 1900 by George Kuntzman. This was his insurance office at the time. This was a very nice office to have because of it's nice display windows. After this building was donated to the museum, we turned it into our saloon, really because it was the only building that we could get the tall back bar into.

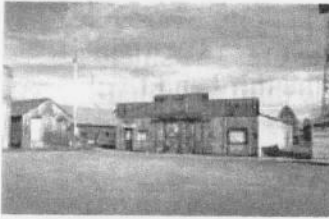
3



The **Battle Miner** is the only building left from the ghost town of Battle Lake. It was built on the Crest of the Continental Divide 12 miles West of Encampment. This was the home of George Eberhart in Battle Lake. In 1902 he moved this building to Encampment where he and his wife Josephine lived while their new home was being built.



This is the **Vo Ag Building** that was built in 1935 by the Vocational Agriculture students from Encampment School, under the direction of instructor Wilbur Wood. The new school was built in '91 and had no longer use for this building so they donated it to the museum.



This is the **Livery Stable**. We use this building to house all of our older means of transportation along with farming and ranching tools.



This is the **Lake Creek Stage Station**. William Brause built it on Lake Creek three miles North of Saratoga in the late 1870's. Nettie & Charles Scribner bought the ranch in 1902. At one time there were 158 horses pastured here.



This is the **Weber Springs Guard Station**. It was built in 1940 and used by the Forest Service. There were 8 of these cabins on this side of the Sierra Madre Mountains. Usually 2 men would come stay at these cabins for about 2 weeks at a time, they did things like measure growth of trees and watch for fires.



This is the **Tie Hack Cabin**. These cabins were located in what were called tie hack camps. There were usually 2-3 of these cabins in each camp along with a two story outhouse and a cookhouse. They would sleep 6-8 men in one cabin.

They cut logs all winter long which is how they earned their nickname as "Tie Hackers". Once spring came and the snow melted, they hauled the logs to the river and rode them to Ft. Steele which is where they were then shipped to the train yards.



This is the **Peryam House**, it was built in 1886 by Guy Nichols and his nephew Ezra. After the Nichols moved out, the Peryams moved in. It was moved to Riverside, just a few miles away. This building was so big that we had to cut it in half to move it to its new location at the museum.



This is the **Wolfard Schoolhouse**. It was built in 1895 by William Henry Wolford. It was located out on their ranch. They had ten kids, nine boys and one girl, and the one girl was the youngest! It was moved to the museum in June 1986.



The **Aerial Tramway** ran 16 miles between the smelter in Encampment, WY and the Ferris Haggerty Mine up in the mountains. There were 375 wooden towers and 800 ore buckets. Each ore bucket could hold up to 700 lbs of copper ore. Every day the Ferris Haggerty produced fifty tons of copper ore. The smelter was built in 1902 and burnt down in 1907 for the third and final time.



The Parkison House



The **Saratoga Cabin** was built prior to 1890 by John Cluff. Mildred Needham lived in this cabin as a bride. Charley Fait & Lizzie Nichols were married in 1897 & this was their first home.

LUNCH - ENCAMPMENT TOWN PARK. HOSTESS, DOREEN HARVEY.

The Encampment Town Park is next to the Encampment Museum. You may eat your sack lunch in the park, or as an alternative, the Encampment Lions Club will be having a Cowboy Poetry event in the park. Please feel free to listen in and purchase food from the vendor(s) if you would like.

After lunch, we will journey north west of Encampment to the Silver Spur Ranch.

STOP 3: SILVER SPUR RANCH (SOUTH COW CREEK HEADQUARTERS). HOSTESS, IRENE E. ARCHIBALD.

Rich in ranching heritage, the Silver Spur Ranch has operations in Wyoming, New Mexico, Colorado and Nebraska. Today, the ranch is ranked as the eighth largest commercial cattle operation in the U.S. and is home to a progressive ranch operation and outfitting services. The ranches are steeped with natural beauty and managers continually work as conservationists and land stewards. It is their mission and challenge to raise cattle that will fit multiple ranch environments and ultimately provide a positive beef product for consumers.



While their ranches date as far back as the 1800's, the Silver Spur is an operation who embraces technology, research and success for future generations. With each tradition of the past, they embody the opportunity to create new traditions and efficiencies that will ensure these ranches for generations to come.



The Silver Spur Ranch headquarters are based out of Encampment. The ranch divisions are surrounded by stunning mountain views. During the summer, cattle graze on forest / mountain allotments, meadows or native sage brush country. In early fall, cattle are trailed or hauled to spend winter months closer to home ranch locations. Ranch divisions

include: Head Quarters, Cow Creek, Hanging Bull, Elk Hollow, Bar M, VX, Mill Iron and Cedar Creek. Northern Colorado divisions are in the Walden area and include these divisions: Lone Pine, Canadian, Big Horn, Three Rivers, and Diamond J. Registered Charolais, Angus, Red Angus and Range Fire composites are run on the Hanging Bull and Mill Iron divisions. Commercial cattle run on the remaining ranches.

The area we are visiting will be have substantial haying activity during our visit. This area of the Silver Spur Ranch is one of the larger hay producers since it likes along Cow Creek and its tributaries.



8

This page was after tour stops - Decksee

Our tour disbands at this point. Thank you for attending and drive safely!

We hope to see you on the 64th Old Time Ranch Tour in 2014!

What is Kiwanis?

The Laramie Kiwanis Club is a group of dynamic individuals who are focused on planning, managing, and participating in activities to better their community and the world around them. The Laramie Kiwanis strive to make the life of all children better while pursuing the six objectives of Kiwanis International.

Kiwanis Objects

The six permanent Objects of Kiwanis International were approved by Kiwanis club delegates at the 1924 Kiwanis International Convention in Denver, Colorado. Through the decades, they have remained unchanged.

- ❖ To give primacy to the human and spiritual rather than to the material values of life.
- ❖ To encourage the daily living of the Golden Rule in all human relationships.
- ❖ To promote the adoption and the application of higher social, business and professional standards.
- ❖ To develop, by precept and example, a more intelligent, aggressive and serviceable citizenship.
- ❖ To provide, through Kiwanis clubs, a practical means to form enduring friendships, to render altruistic service and to build better communities.
- ❖ To cooperate in creating and maintaining that sound public opinion and high idealism which make possible the increase of righteousness, justice, patriotism and goodwill.

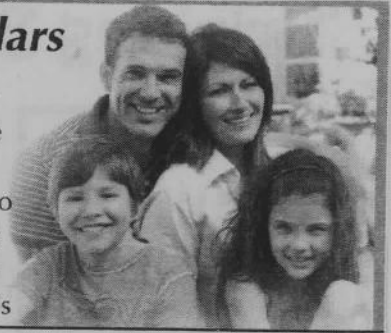
We welcome new members and guests at all meetings! If you – or anyone you know – might be interested in learning about or joining Kiwanis, please come to a meeting or talk to any Kiwanian. The Laramie club meets every Tuesday at noon at Altitude Chophouse and Brewery, 320 South 2nd Street in downtown Laramie. You can also find us on facebook, or online at <http://www.laramiekiwanis.org/>

**Would you like more dollars
in your pocket?**

Earn up to 3.00% APR* on your Ultimate
Checking Account with Laramie Plains
Federal Credit Union and put the money to
work for you. Open an account online at

www.lpcfcu.com

or give us a call at 745-5365 for more details



*Moving Forward with Ultimate Checking from
Laramie Plains Federal Credit Union.*

*Rate stated as Annual Percentage Yield and is subject to change, fees could reduce earnings, some restrictions apply. Member NCUA.



LARAMIE PLAINS
FEDERAL CREDIT UNION

Duane Toro Real Estate

3625 Grand Avenue
Laramie, Wyoming 82070

(307) 742-2070

residential • investment • commercial • rural



The Place You Want To Be
acpe federal credit union

2835 E. Grand Avenue • Laramie, WY • (307) 745-4726

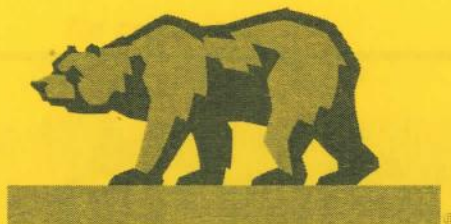
<http://www.acpefcu.com>

'Bringing Buyers and Sellers Together'

Advantage
REAL ESTATE

DONNA EMERY, Broker
306 South 2nd Street
Laramie, WY 82070
307-742-1586
www.laramie-advantage.com

Advantage
REAL ESTATE



BANK OF THE WEST



(clockwise: Philip Nicholas, Mitch Edwards,
Jason Tangeman, Stacy Rostad, Julie Wickett)

Nicholas & Tangeman, LLC
Wyoming Attorneys Representing
Ranchers for Generations
170 North 5th Street
Laramie, WY 82073-0928
Phone: 307-742-7140
www.wyolegal.com

- Home Loans
- Auto Loans
- Savings/Checking Accounts
- Business Loans



SECURITY FIRST BANK

Just Right Banking

608 Grand Avenue PO Box 947 Laramie, WY 82070
307-721-2111 fax 307-721-2113

608 Grand Avenue
P. O. Box 947
Laramie, WY 82070
(307) 721-2111

